

Supplementary material for “The nascent wind of AGB star R Doradus: evidence for a recent episode of enhanced mass loss”

P.T. Nhung*, D.T. Hoai, P. Tuan-Anh, P. Darriulat, P.N. Diep, N.T. Phuong, and T.T. Thai

Department of Astrophysics, Vietnam National Space Center (VNSC), Vietnam Academy of Science and Technology (VAST), 18 Hoang Quoc Viet, Cau Giay, Ha Noi, Vietnam

The figures below provide finely segmented projections of the data-cube on various pair combinations of variables x , y , R , ω and V_z defined in the main text of the article. Angles are in degrees, distances in arcsec and velocities in km s^{-1} .

*E-mail: pttnhung@vnsc.org.vn

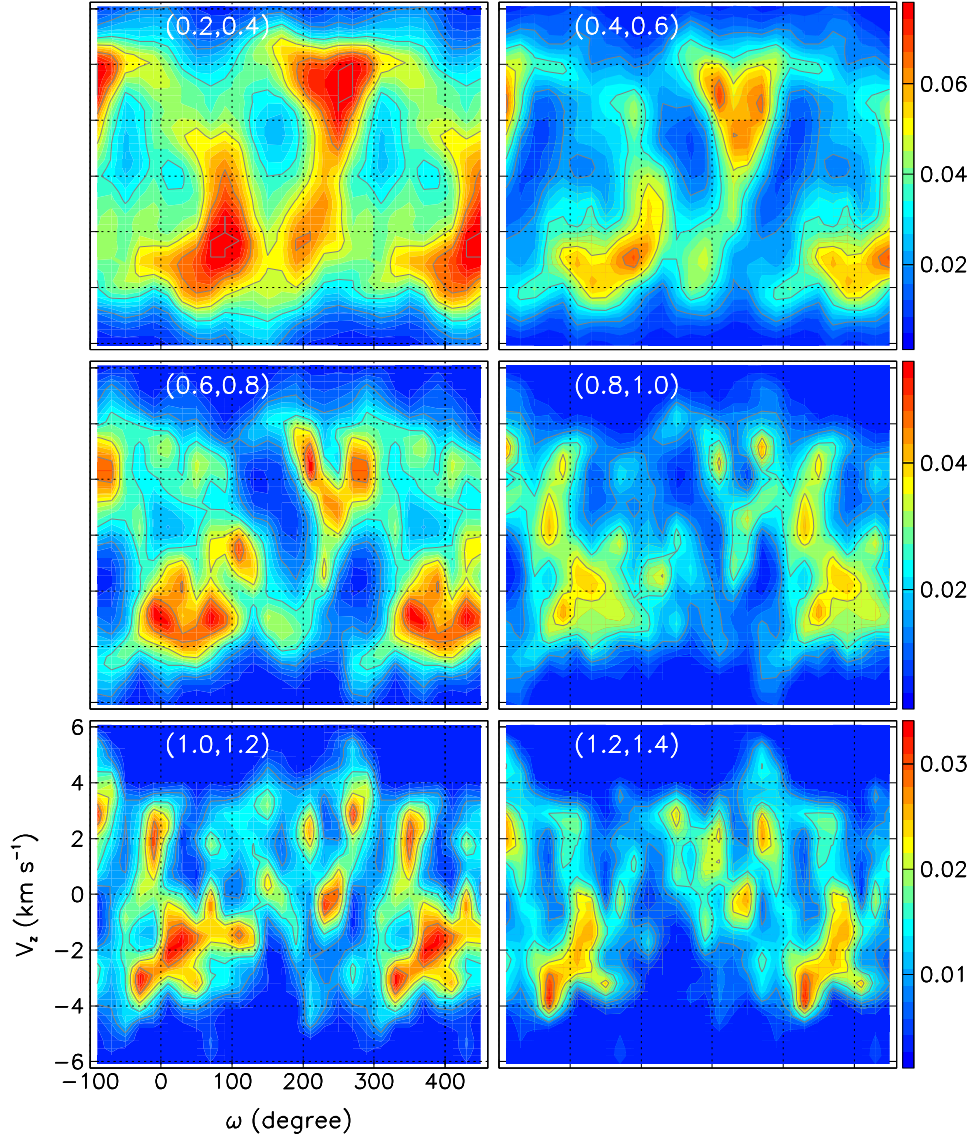


Figure 1: Projections on (ω, V_z) plane in bins of R . The values of R are given in the inserts. The colour scales are in units of Jy beam^{-1} .

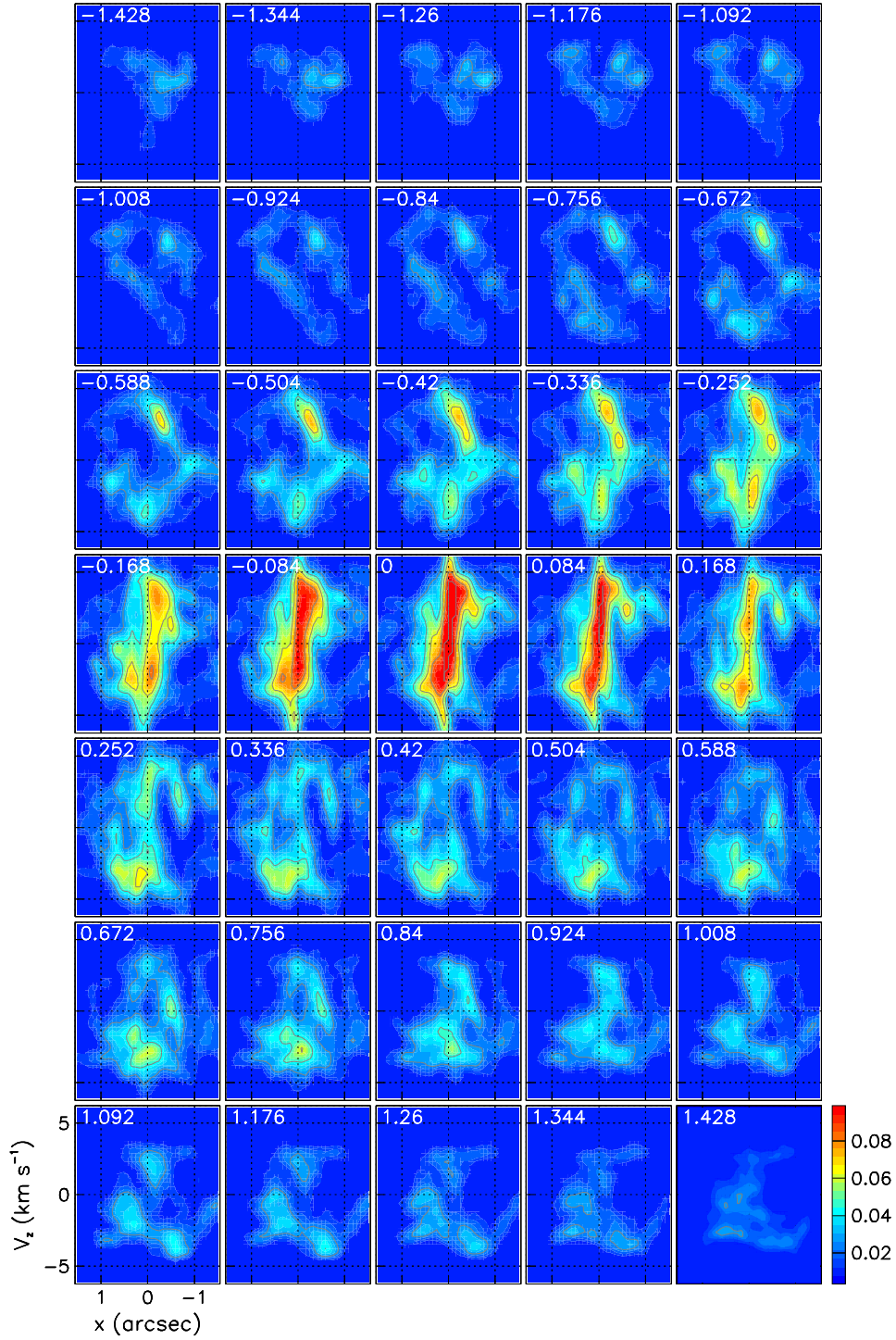


Figure 2: Projections on (x, V_z) plane in bins of y . The central values of the y bins are given in the inserts. The colour scale is in units of Jy beam^{-1} .

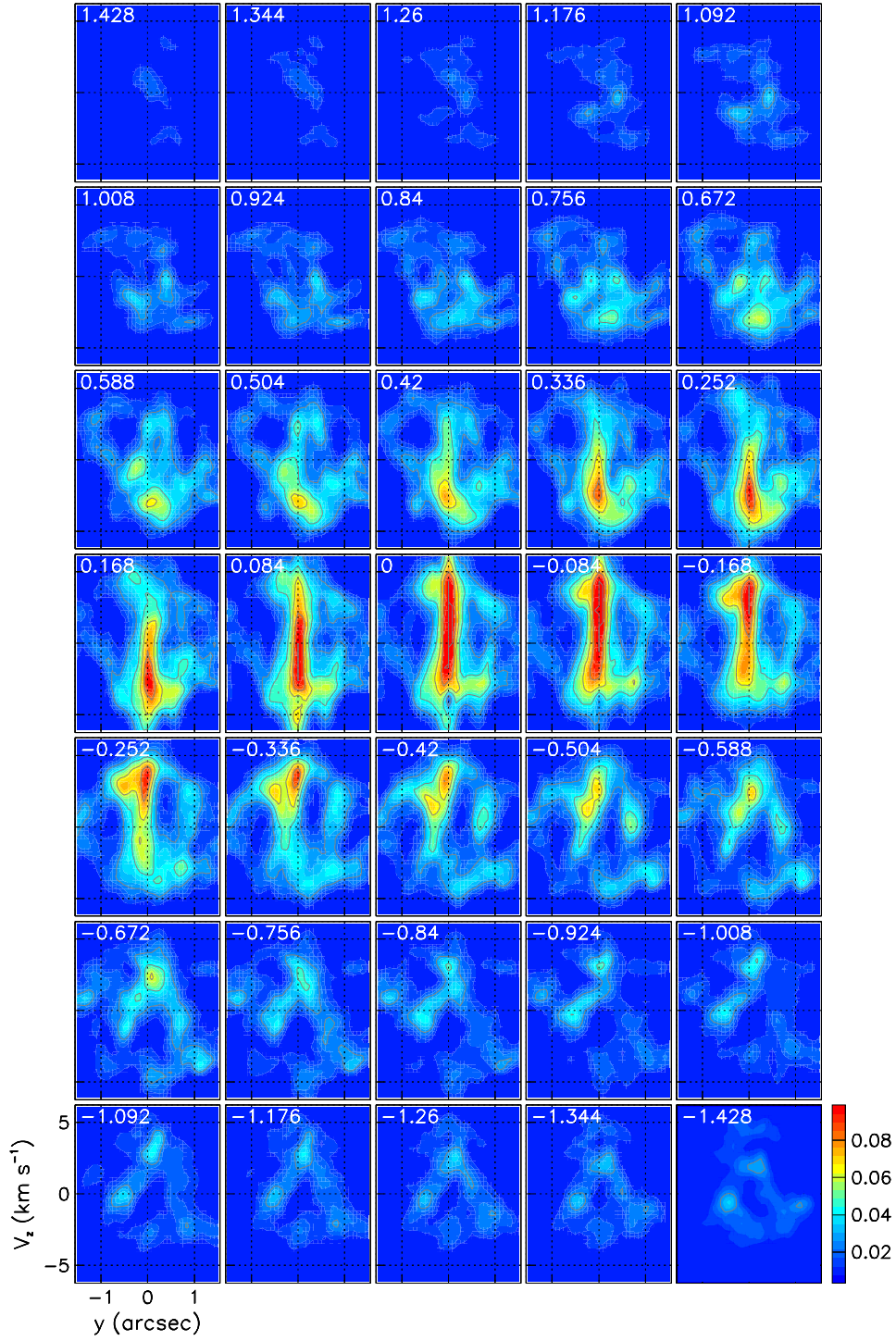


Figure 3: Projections on (x, V_z) plane in bins of x . The central values of the x bins are given in the inserts. The colour scale is in units of Jy beam^{-1} .

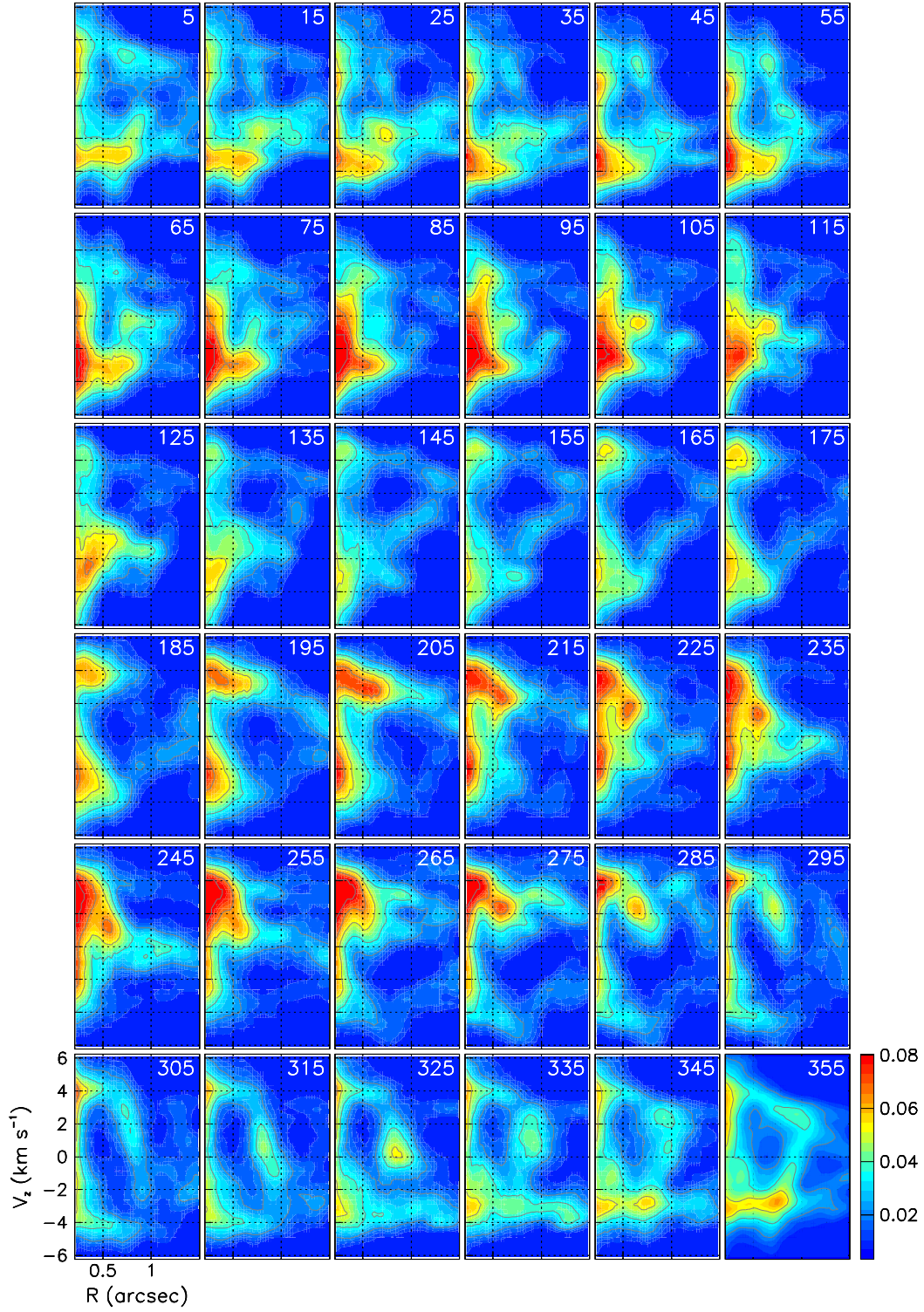


Figure 4: Projections on (R, V_z) plane in bins of ω . The central values of the ω bins are given in the inserts. The colour scale is in units of Jy beam^{-1} .

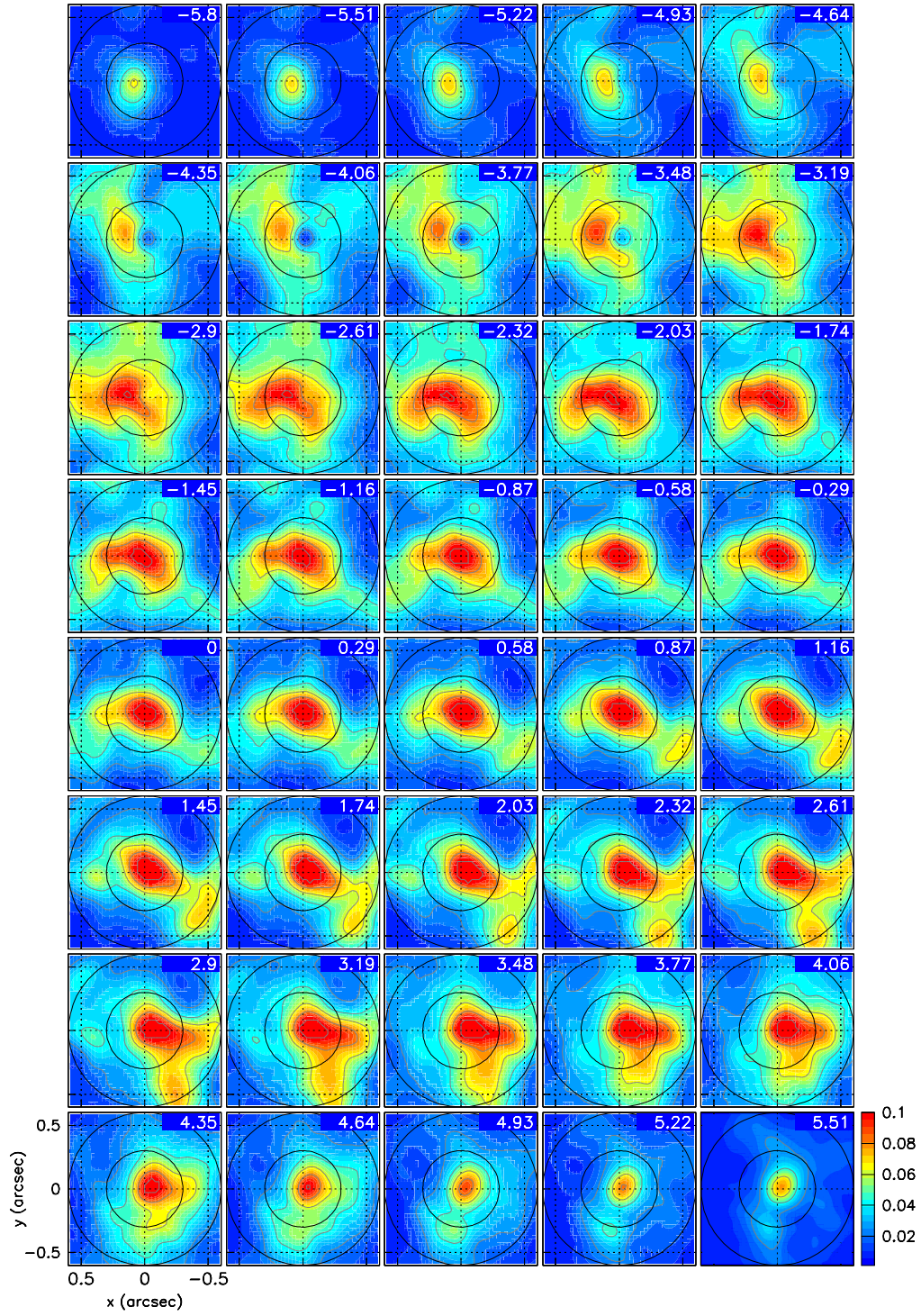


Figure 5: Channel maps for $(|x| < 0.6 \text{ arcsec})$ and $(|y| < 0.6 \text{ arcsec})$. The values of V_z are given in the inserts. The colour scale is in units of Jy beam^{-1} .

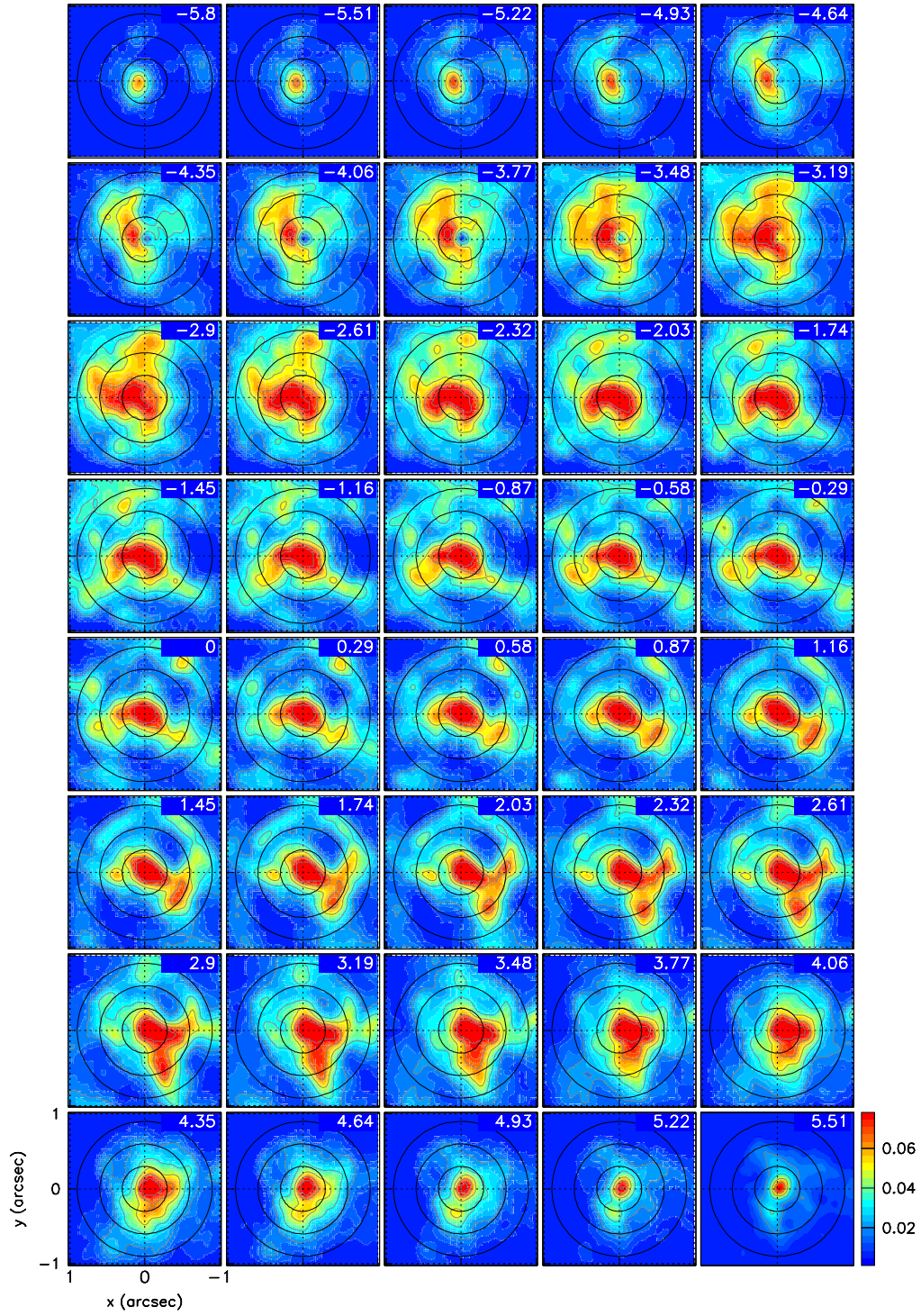


Figure 6: Channel maps for $|x| < 1$ arcsec and $|y| < 1$ arcsec. The values of V_z are given in the inserts. The colour scale is in units of Jy beam^{-1} .

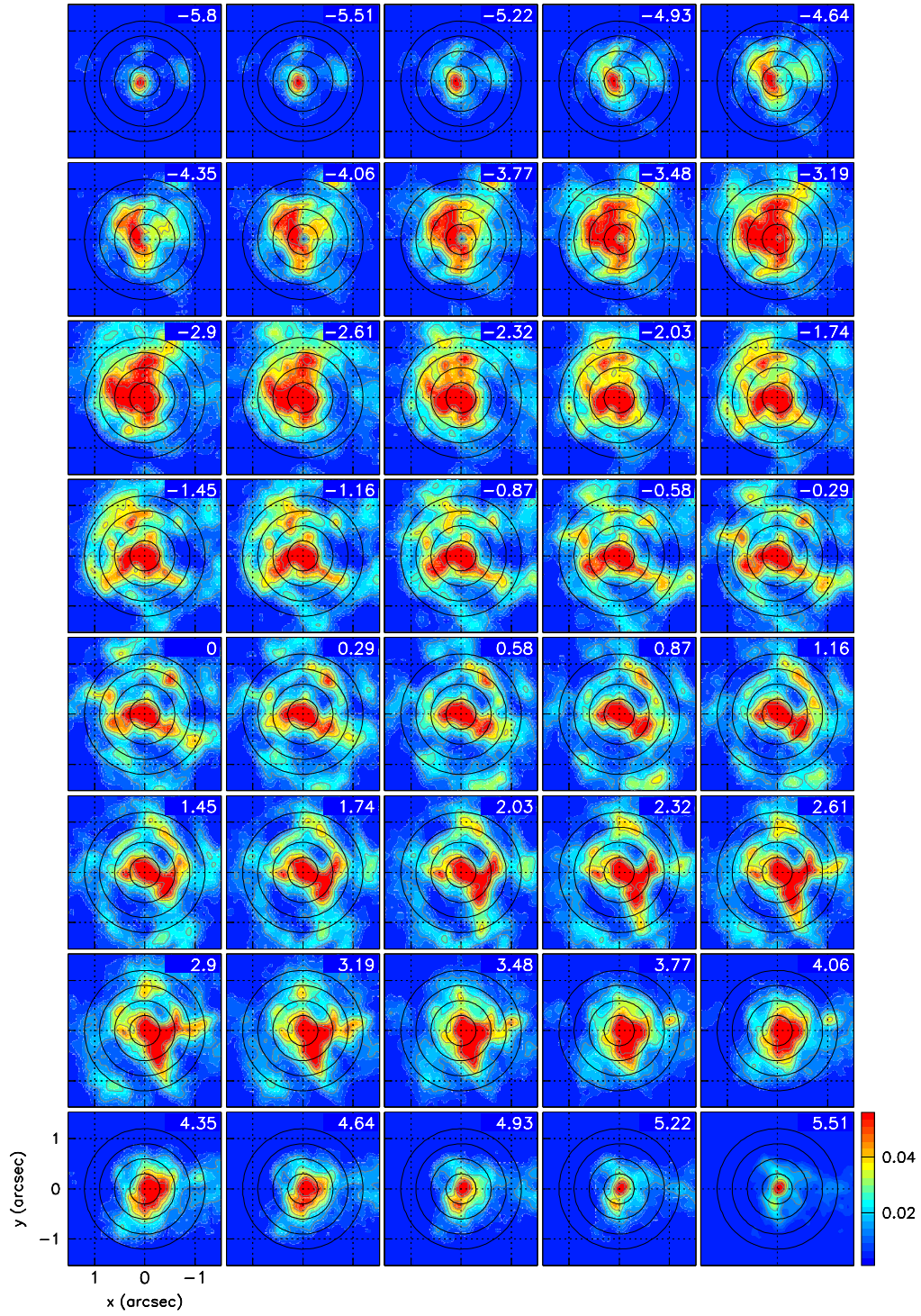


Figure 7: Channel maps for $|x| < 1.5$ arcsec and $|y| < 1.5$ arcsec. The values of V_z are given in the inserts. The colour scale is in units of Jy beam^{-1} .

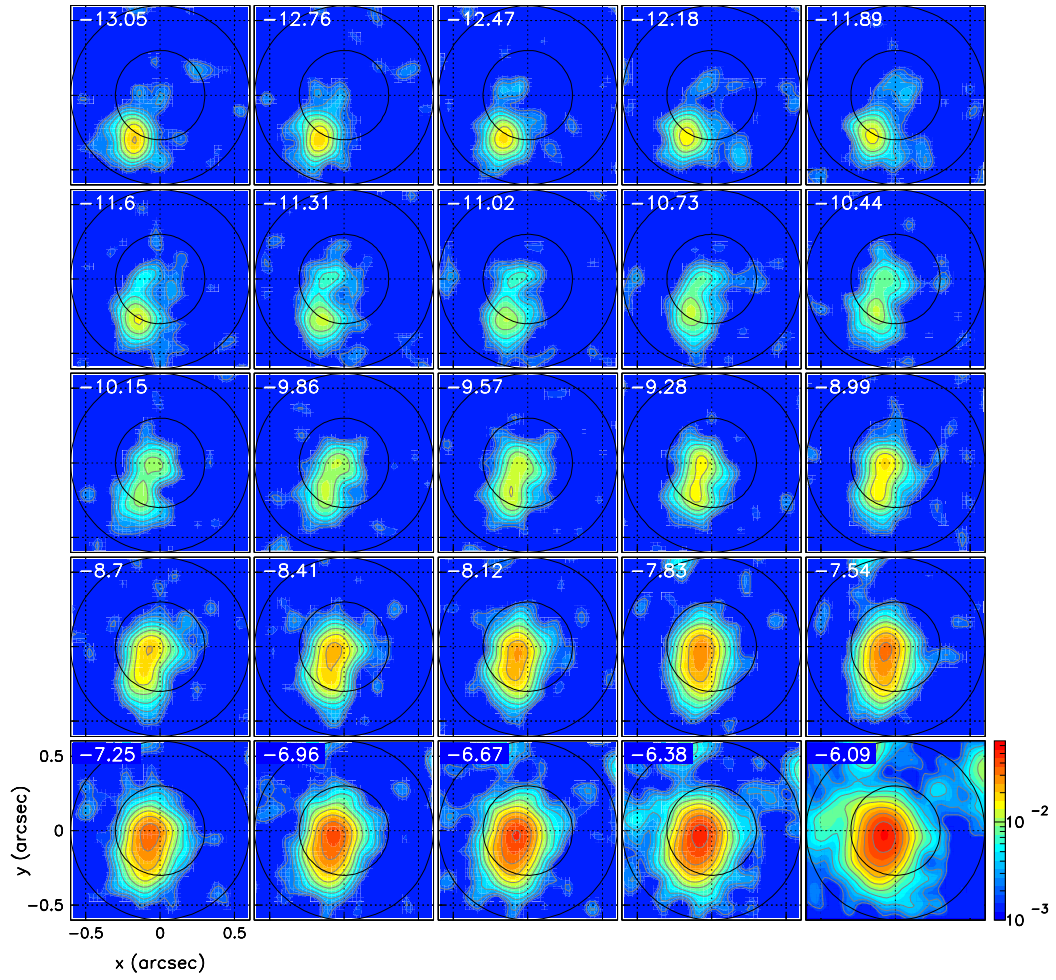


Figure 8: Channel maps for the blue-shifted high Doppler velocity component. The values of V_z are given in the inserts. The colour scale is in units of Jy beam^{-1} .

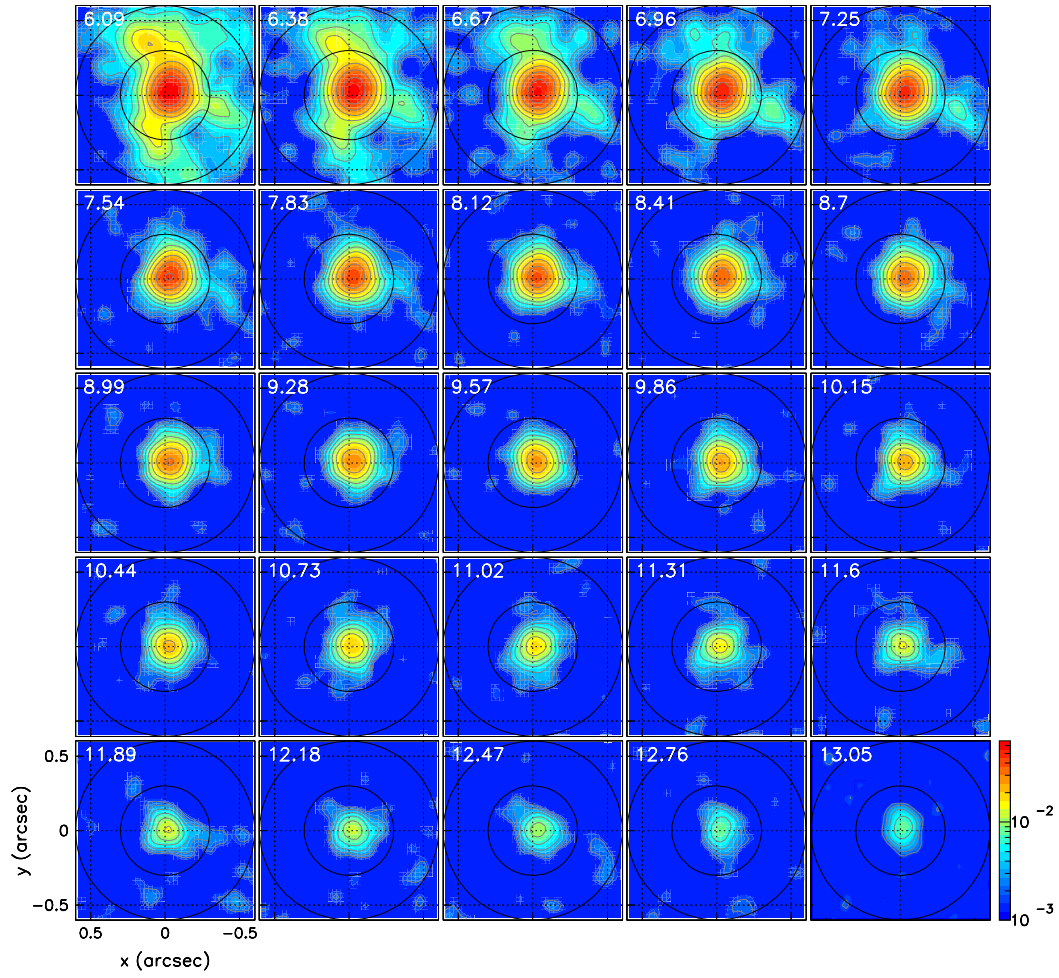


Figure 9: Channel maps for the red-shifted high Doppler velocity component. The values of V_z are given in the inserts. The colour scale is in units of Jy beam^{-1} .